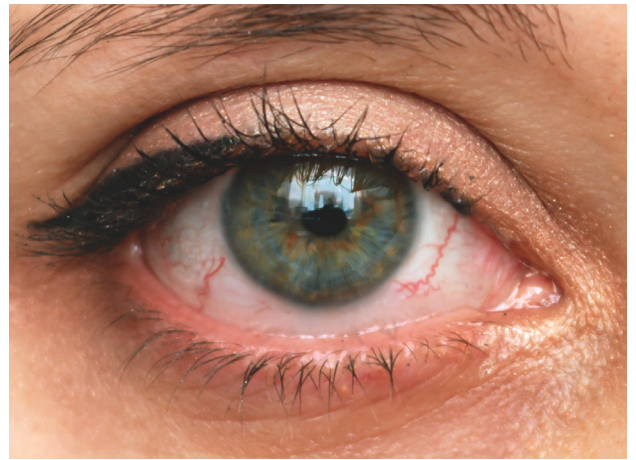




TEAR-BASED POINT-OF-CARE (T-POC) QUANTITATIVE TESTING PLATFORM

The T-POC Quantitative Testing Platform, exclusively from Verséa Ophthalmics, is being used to improve patient care in the areas of dry eye, ocular immunology, ocular allergy and ocular surgery, including LASIK. The tests are simple to perform, accurate, rapid, repeatable and reimbursable.



With the T-POC quantitative testing platform, exclusively offered by Verséa Ophthalmics, ocular surface disease patients, including Dry Eye Disease sufferers, can be diagnosed, treated, and monitored directly within your practice using quantitative IgE and lactoferrin results delivered within minutes.

Answer questions such as:

- What is the cause?
- Is it aqueous-deficient or evaporative disease?
- Is there an allergic component?

T-POC TESTING IS BILLABLE USING THE FOLLOWING UNIQUE CPT CODES:

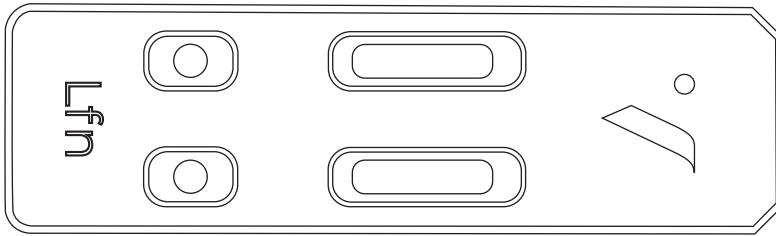
Lactoferrin Test: CPT CODE 83520

IgE Allergy Test: CPT CODE 82785

Reimbursable by Medicare and Private Insurance

IS IT AQUEOUS DEFICIENT OR EVAPORATIVE?

T-POC Lactoferrin Testing



Benefits of testing lactoferrin levels in the tear film:

- Low Lactoferrin levels directly correlate to DED caused by aqueous deficiency
- The severity of DED can be determined by the Lactoferrin level
- Low Lactoferrin levels indicate DED and depressed ocular immunity, which may represent an increased surgical risk
- Low Lactoferrin levels may indicate the cause of contact lens intolerance
- Changes in Lactoferrin levels may show the efficacy of the prescribed treatment

Lactoferrin - what is it?

Lactoferrin is a protein that exhibits a unique combination of antimicrobial, antiviral and antiinflammatory properties. It is one of the eye's important immunological defense mechanisms and also is a biomarker used to assess the secretory function of the lacrimal gland.

Sensitivity: 83%

Specificity: 98%

Precision: < 9% CV

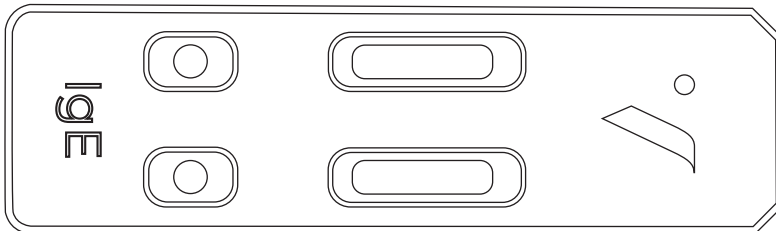
Normal Lf: > 0.9 mg/ml

Low Lf: < 0.9 mg/ml

Shelf Life: 12 months

IS THERE AN ALLERGIC COMPONENT?

T-POC IgE Testing



Benefits of testing IgE levels in the tear film:

- The presence of IgE indicates the diagnosis of allergic conjunctivitis
- Levels of IgE increase with the severity of the allergic response
- IgE testing can help differentiate allergic conjunctivitis from dry eye disease
- Allergic conjunctivitis is a contraindication for LASIK and other surgical procedures
- Changes in IgE levels may show the efficacy of the prescribed treatment

IgE - what is it?

IgE (Immunoglobulin E) is an antibody that binds to allergens and triggers the degranulation of mast cells that cause inflammation.

Sensitivity: 93%

Specificity: 96%

High IgE: < 9% CV

Test Time: < 80 ng/ml

Normal IgE: > 80 ng/ml

Shelf Life: 12 months

Contact at: **1.800.397.0670** or visit
www.versea.com/ophthalmics